

MONITORING

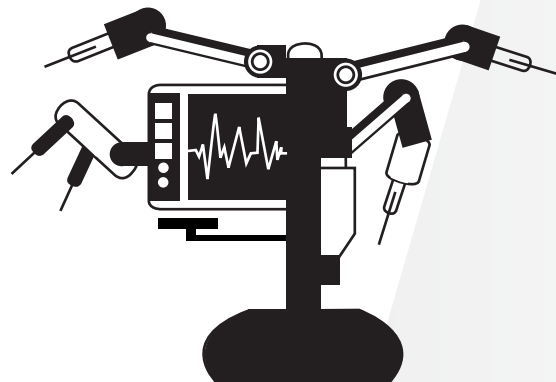


MANAGED SERVICES

INFORMATION AND CYBER SECURITY | PRIVACY | BUSINESS RESILIENCE

An All-in-One Approach to Threat Detection

Wolfpack's Monitoring Service provides a comprehensive, unified approach to security monitoring, detecting threats, responding to incidents and supporting compliance reports - in one location and combined with real-time threat intelligence.



Your environment is protected through five essential security capabilities:



Asset Discovery

Know who and what is connected to your environment at all times.



Vulnerability Assessment

Know where vulnerabilities exist to avoid exploitation and compromise.



Intrusion Detection

Know when suspicious activities happen in your environment.



SIEM and Log Management

Correlate and analyse security event data from across your network.

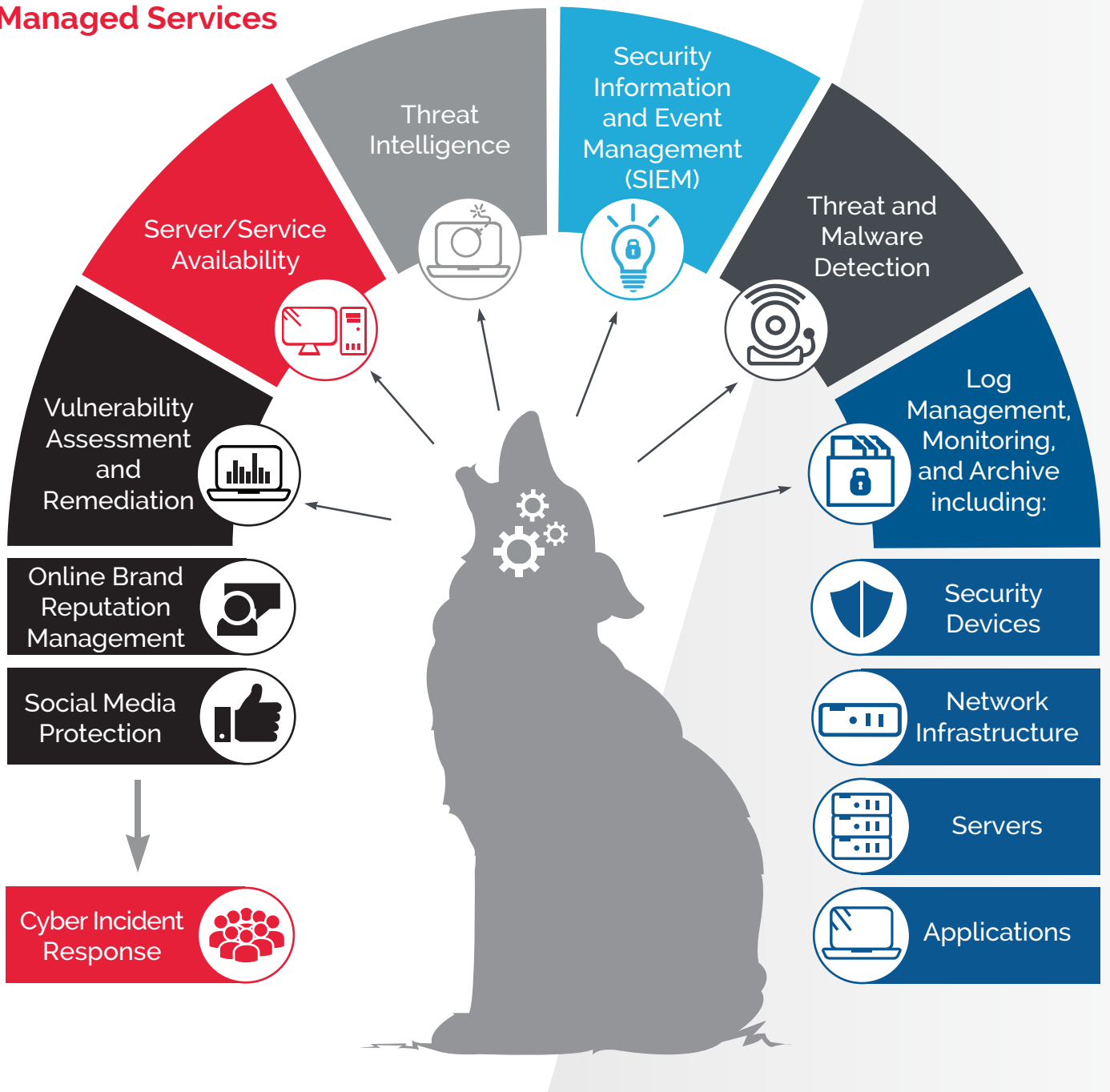


Behavioural Monitoring

Identify suspicious behaviour and potentially compromised systems.

Actionable threat intelligence ensures the latest security intelligence is available for threat assessment, detection and response, reducing the time you would typically spend researching and responding to threats. This threat intelligence provides the latest plugins, vulnerability signatures, IDS signatures, correlation rules and analytics, and incident response templates from our partner's research labs team. Deployed sensors scan, monitor, and collect data, giving you complete visibility into threats affecting your network and insights into how to mitigate them. Data is aggregated and stored centrally on the appliance in your data centre. Within minutes of installation, the monitoring platform discovers the assets across your environment, determines what software and services are installed, how they're configured, any potential vulnerabilities, and identifies active threats being executed against them.

Managed Services



KEY PARTNERSHIPS



CONTACT US

- +27 11 794 7322
- info@wolfpackrisk.com
- www.wolfpackrisk.com